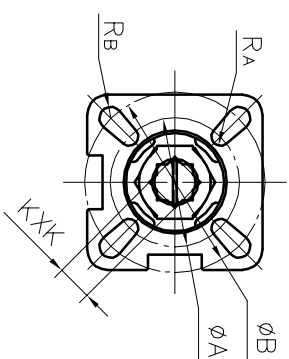


Nominal Diameter	d	D1	D2	D	L	b	n-∅d1	RA	Rb	A	B	KXX
15	1/2"	15	35	60.3	90	10.5	4-16	3.0	3.0	36	42	9X9
20	3/4"	20	43	69.9	100	11.7	4-16	3.0	3.0	36	42	9X9
25	1"	25	51	79.4	110	12.7	4-16	3.0	3.5	42	50	11X11
32	1 1/4"	32	63.5	88.9	115	14.0	4-16	3.0	3.5	42	50	11X11
40	1 1/2"	40	73	98.4	125	16.5	4-16	3.5	4.5	50	70	14X14
50	2"	50	92	120.7	150	17.8	4-19	3.5	4.5	50	70	14X14
65	2 1/2"	65	105	139.7	180	19.0	4-19	4.5	5.5	70	102	17X17
80	3"	80	127	152.4	190	20.3	4-19	4.5	5.5	70	102	17X17
100	4"	100	157	190.5	230	22.3	8-19	4.5	5.5	70	102	17X17

### SPECIFICATIONS

Nominal pressure	CL150
Shell test pressure	3.0 MPa
Seal test pressure	0.6 MPa
Applicable temperature	-29~180 °C



15	GB/T 6172.1-2000	NUT	1	A194-8	
14	Q41F-CL150-2A-11	CROWN WASHER	1	304	
13	Q41F-CL150-2A-10	DISH SHRAPNEL	2	301	
12	Q41F-CL150-2A-09	GLAND	1	304	
11	GB/T 3452.1-2005	PACKING	1	PTFE	
10	Q41F-CL150-2A-08	O RING	1	FPM	
9	Q41F-CL150-2A-07	STEM WASHER	1	PTFE	
8	Q41F-CL150-2A-06	STEM	1	304	
7	GB/T 6170-2000	NUT		A194-8	
6	GB/T 898-1988	BOLT		A193-B8	
5	Q41F-CL150-2A-05	BONNET	1	A351 CF8	
4	Q41F-CL150-2A-04	GASKET	1	PTFE	
3	Q41F-CL150-2A-03	BALL	1	304	
2	Q41F-CL150-2A-02	SEAT	2	PTFE	
1	Q41F-CL150-2A-01	BODY	1	A351 CF8	
NO.	DRAWING NO.	DESCRIPTION	Q'TY	MATERIAL	REMARKS
GENERAL DRAWING					
FLANGE BALL VALVE					
Q41F-CL150-2A-00					
MARK	BEFORE MODIFIED	AFTER MODIFIED	SCALE		
DRA.	APP.	DATE			
CHK.		DATE			